



For Government, OpenStreetMap is More than
Excellent Data. It's a Transformation.

Mikel Maron @mikel

This talk is not about

Hard questions of use

Domestic US use

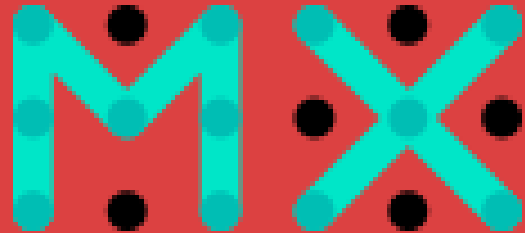
Professionalization of OSM

And is about

How government *may* be changing when
exposed to OSM



THE U.S. DIGITAL SERVICE



Government Innovation



Bureaucracy is real

man_made=silo

A storage container for bulk material, often grains such as corn or wheat

Comparison list (0 items)

Filter: No filter

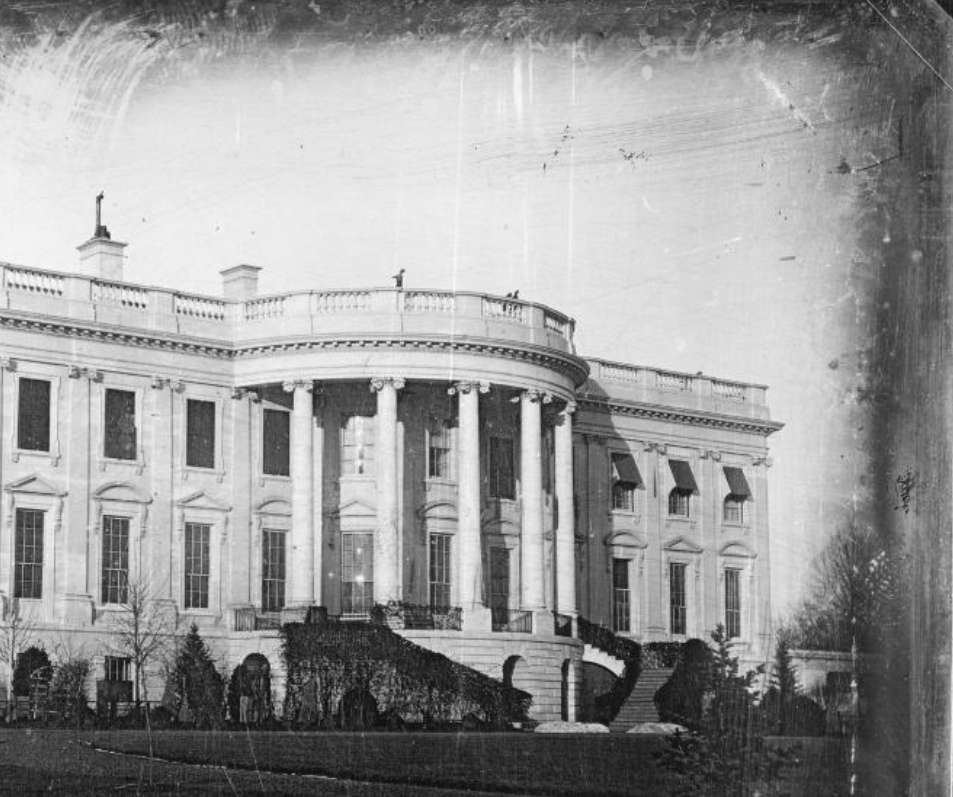
XAPI JOSM Level0 Editor  overpass turbo

Overview Combinations **Map** Wiki Projects

Geographical distribution of this tag



Silos are real

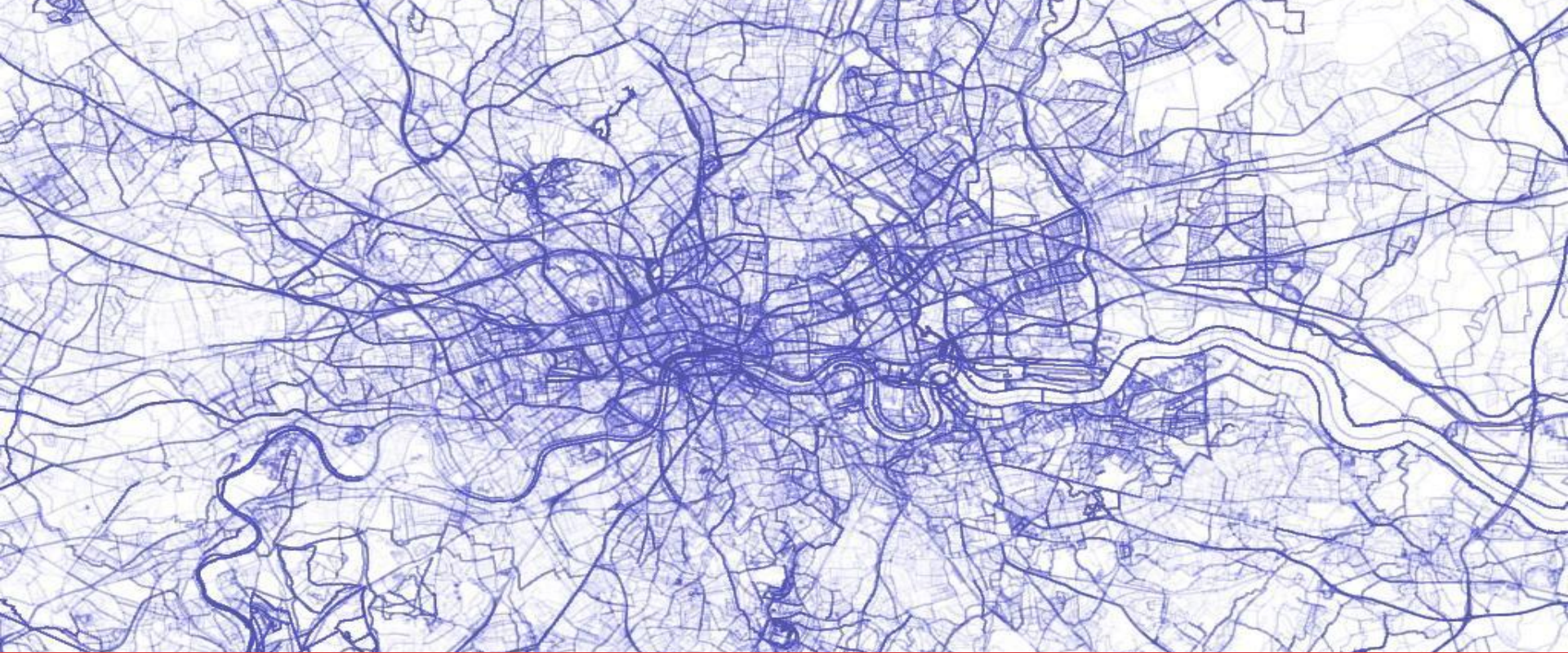


Front doors





OpenStreetMap is People *before* Data



... a Stable, Dynamic, Complex Network



OPEN CITIES



USAID

FROM THE AMERICAN PEOPLE





Supporting but *not* Controlling





HIU

**HUMANITARIAN
INFORMATION
UNIT**



Humanitarian Information Unit

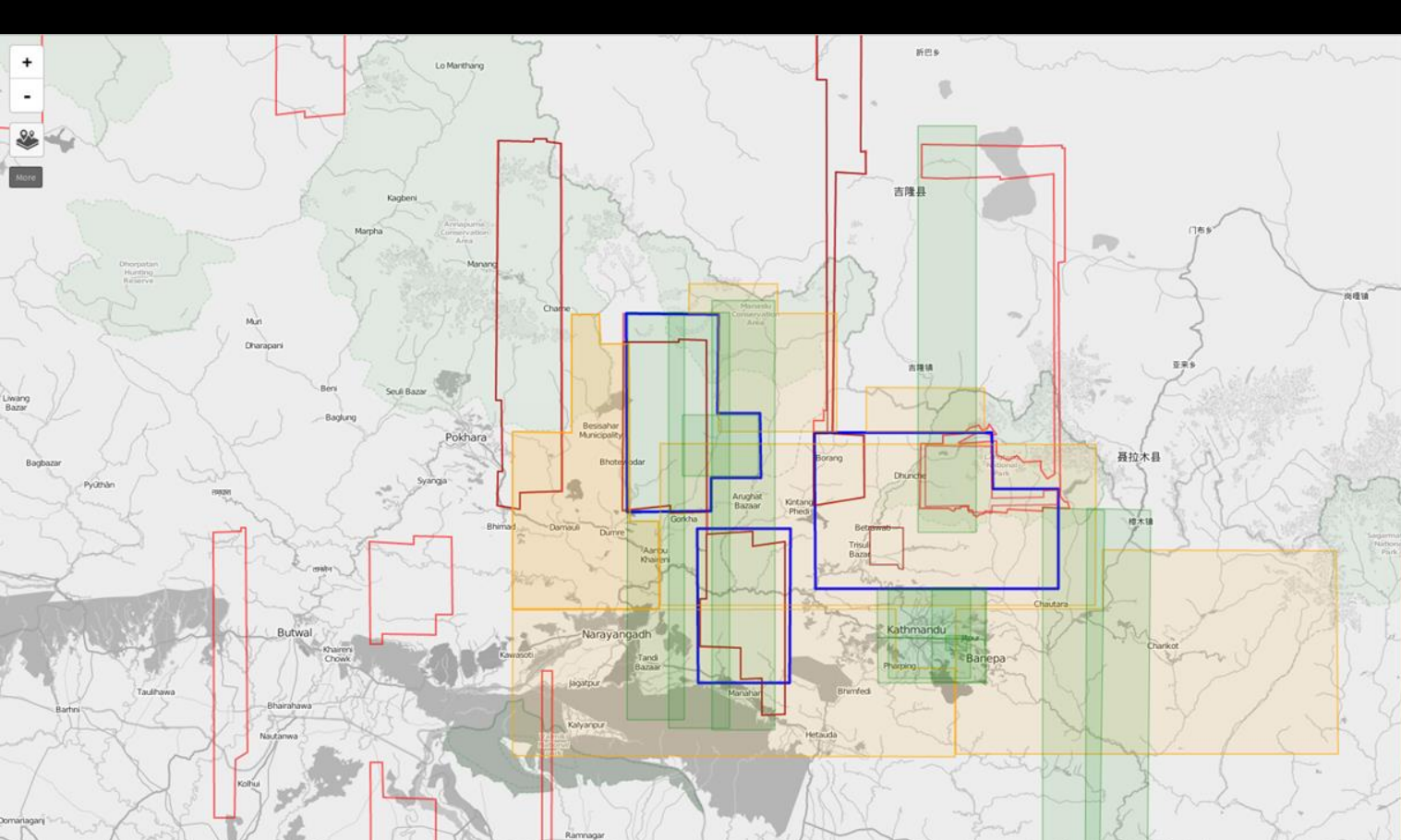
IMAGERY TO THE CROWD

Share | [✉](#) [f](#) [t](#) [g+](#)



Imagery to the Crowd (IttC) is part of the State Department's Humanitarian Information Unit (HIU). The HIU provides information to decision-makers and partners in preparation for and response to humanitarian emergencies worldwide, promotes innovative technologies and best practices for humanitarian information management. It is a U.S. State Department program established by the United States Government to support the humanitarian information needs of the international community.

Imagery to the Crowd



HOT Imagery Coordination

Filter...

Bing low-res Coverage

- Bing low-res Coverage
- Bing low-res Coverage
- Bing low-res Coverage
- Bing low-res Coverage
- Bing low-res Coverage
- Bing low-res Coverage
- Bing low-res Coverage
- Bing low-res Coverage
- Bing low-res Coverage
- Bing low-res Coverage
- Bing low-res Coverage
- Bing low-res Coverage

Digital Globe Coverage


- Digital Globe Coverage
- Digital Globe Coverage
- 03-06-2015
- 03-12-2015
- 04-08-2015
- 04-08-2015
- 04-08-2015
- 2012-12-15
- 2013-02-13
- 2013-02-13



<http://mapgive.state.gov/>

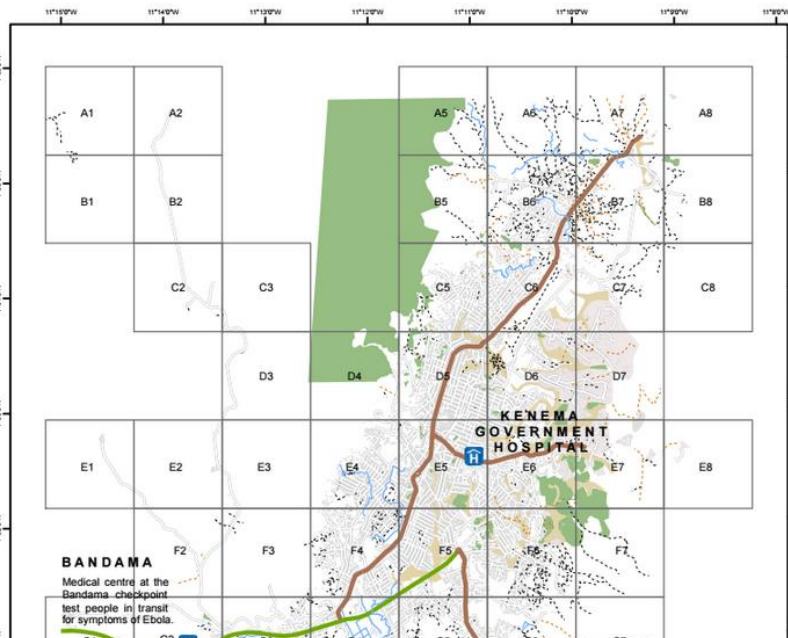
Public Diplomacy

Kenema, Sierra Leone

 International Federation of Red Cross and Red Crescent Societies



- Buildings**
 - Building
- Land Use**
 - Grassland, Forest
 - Water
 - Farm
 - Residential
- Roads and Rivers**
 - Primary Rd
 - Trunk Rd
 - Secondary Rd
 - Roads
 - Track
 - Path
 - River



Ramallah #Map4Ebola



Lahore #Map4Nepal

16 - 22 NOVEMBER 2014



**OPENSTREETMAP
GEOGRAPHY AWARENESS WEEK**

<http://osmgeoweb.org/>



YALI Connect Camps

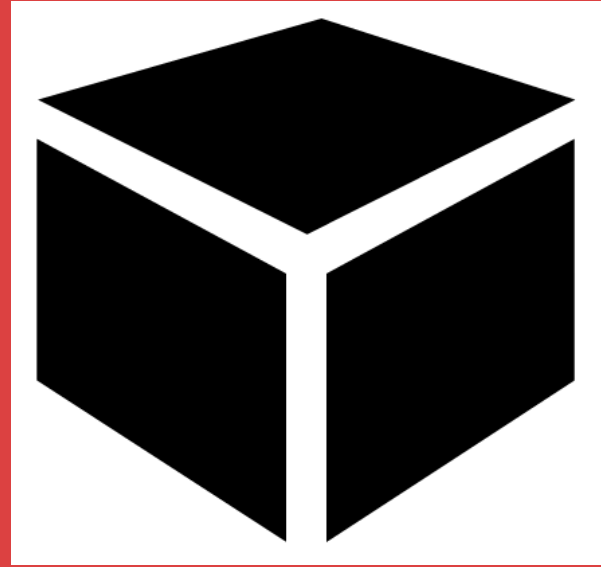
Anche tu puoi essere d'aiuto.

Mappa un qualsiasi posto nel mondo, anche se non sei mai stato lì.

I dati cartografici sono fondamentali per le missioni umanitarie e di sviluppo. MapGive aiuta i nuovi volontari ad imparare a mappare ed a farsi coinvolgere nelle attività on-line.



<http://mapgive.openstreetmap.it/>



MapGive in a Box

MapGive in a Box

Mapping and MapGive

Mapathons

Field Projects

Examples

Logistics

Resources



MapGive on the Ground



State of the Map LatAm 2015

Santiago de Chile |

[INICIO](#)

[PROPUESTAS DE CHARLAS](#)

[GALERÍA](#)

[BECAS](#)

[OSM 2015](#)

[NOTICIAS](#)

[ENTRADAS](#)

[\[ENGLISH\]](#)



En septiembre de este año llevaremos a cabo la primera conferencia **State of the Map LatAm** en Santiago de Chile.

Teniendo como referente la experiencia del **State of the Map global de Buenos Aires** del año pasado, buscamos reunir a la comunidad de mapeadores de Latinoamérica y el mundo, en un evento que nos permita compartir conocimientos, técnicas y experiencias comunitarias y empresariales en torno a OpenStreetMap.

Para mayores detalles sobre la ciudad, formas de llegar, el transporte dentro de ella, alojamientos y otros, puedes revisar [el artículo](#) en la wiki de OpenStreetMap.

El evento se realizará en los días anteriores al [AbreLatam](#) (7-8) y [ConDatos](#) (9-10), los eventos de Datos Abiertos más grandes de Latinoamérica.

man_made=silo

A storage container for bulk material, often grains such as corn or wheat

Comparison list (0 items)

Filter: No filter

XAPI JOSM Level0 Editor  overpass turbo

Overview Combinations **Map** Wiki Projects

Geographical distribution of this tag



Silos

OSM Institutions

we map together
let's work together



IDP Settlement

Impromptu IDP settlements in urban areas are located in non build-up portions of a city. They can usually be identified by bright orange or blue tents arranged in a non linear fashion within open areas. Open areas usually consist of parks, school yards, athletic fields, or other small open areas in a city.

An Area IDP settlement will usually have 5 or more tents. Create an area feature and trace the extent of the entire open area, this will allow for calculations of IDP space and can assist with the overall response.



Tracing Guides <https://github.com/hotosm/tracing-guides/>



Basket

For holding stories about how OSM is used in the wild.

Case Study: Humanitarian OpenStreetMap Team

Implementation of a collaborative, crowd-sourced Geographic Information System for humanitarian aid and economic development.

APRIL 18, 2015

Volcano Mapping in Indonesia

Using OSM to mitigate the impact of volcanic eruptions.

APRIL 07, 2015

The first French collaborative National Address Database is now online, and freely accessible.

On April 15th, Thierry Mandon, Secretary of State for State Reform and Simplification, inaugurated the launch of a collaborative and free French National Address Database, a pioneer of its kind.

MARCH 16, 2015

OSM for Malaria Eradication in Botswana

MARCH 01, 2015

Strategic Communications

<https://github.com/osmlab/basket>



Workflow

Prepare A Successful Mapping Assignment

Case Studies

Showcase OSM Use In Educational Settings

What is TeachOSM?

TeachOSM is an online resource to assist educators at all levels to introduce open source mapping, on the OpenStreetMap platform to the classroom. Individual instructors can use the materials provided to develop assignments for their particular discipline and curricular needs.

This site provides the resources help instructors identify, assign, manage and grade a mapping assignment; this includes training documentation for both the instructor and students.

What is OpenStreetMap?

<http://teachosm.org/>

OpenStreetMap response to the April 25 Earthquake in Nepal



On April 25th, a 7.8 magnitude earthquake struck Nepal approximately 30 miles northwest of Kathmandu. With the coordination of [Kathmandu Living Labs](#) and the [Humanitarian OpenStreetMap Team](#), a global volunteer effort to map roads and buildings in the affected area is under way. OpenStreetMap data is being used by the American Red Cross, the World Bank, and other organizations to support response and recovery activities in Nepal.

Read more: http://wiki.openstreetmap.org/wiki/2015_Nepal_earthquake

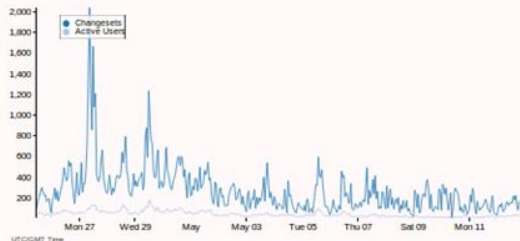
This site provides basic statistics describing the work of OSM volunteers in the response to this disaster. The data is based on hashtags used in changset comments and therefore undercounts the total amount of contributions occurring at this time.

This site is no longer tracking live editing statistics. We thank you for all the hard work done in this unprecedented response effort.

User Contributions

In the month following the earthquake, over **5,055** mappers made more than **111,683** edits to the map. At least **3,544** of these mappers were new to OpenStreetMap.

Changesets Per Hour



Initial HOT Task Tag Counts

These impressive numbers represent just the initial HOT tasks created for the response.

Roads

Buildings

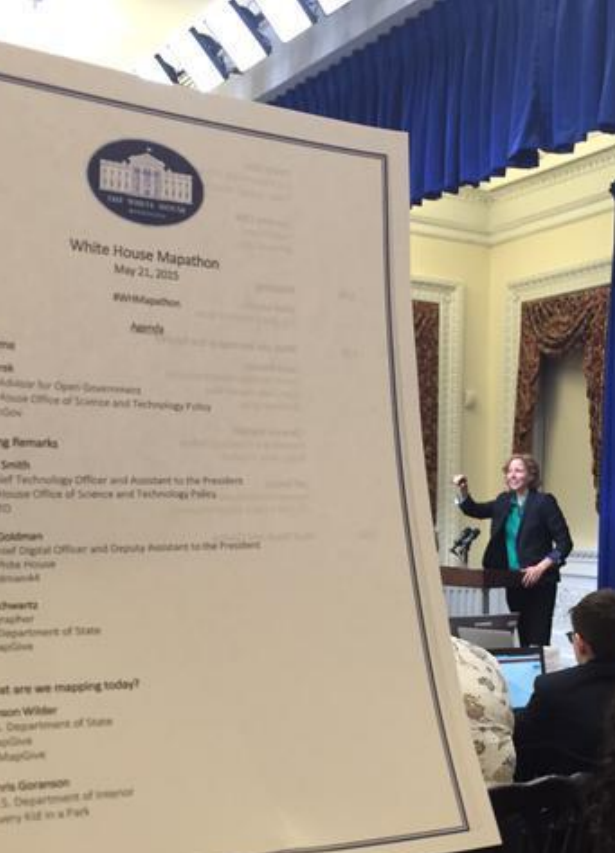
Ways

Total Changesets

Metrics



<http://mapgive.state.gov/events/mapoff/>



Talking About Doing vs. Doing! #whmapahton

● [osm-institutions] RESULTS: MAPOFF After Action Review (11)

People

● Chad Blevins

Apr 15

To Chad Blevins

Hello everyone,

Please find compiled [notes from the #MapOff After Action Review](#). Several core topics have cross cutting themes so there is intentional redundancy in the Lessons and Actions section, take a look and add/edit as you see fit.

A logical next step is to focus on the Actions section. There is a mix between items we should look into immediately, and others to reference before the next mapathon/mapoff. Listed below are the top 5 topics we spent the most time talking about.

- **GitHub tracing guide:** clean up repo and continue planned enhancements.
- **Image off-set:** find solution to NextView/DG problem and create guidance for working with off-set imagery.
- **ID editor:** communicate ideas with Mapbox team, some items we know are in beta testing.
- **Metrics:** continue to develop system, could use a D3 coder.
- **Communications:** meeting hosted by Peace Corps 4/16.

After the meeting last week Mike Mann and I tested a few IP addresses on computers in the GWU Lab. We found they each have a unique IP which is likely why GWU has never been affected by the IP throttle. Something to think about as we plan future events.

I wanted to thank everyone again for your feedback with the review. Looking forward to future collaboration and seeing some folks at the Strategic Comms meeting tomorrow.

Cheers,

After Action / Learning



WIKIPEDIA
The Free Encyclopedia

List of United Nations organizations by location

From Wikipedia, the free encyclopedia

While the secretariat of the United Nations is headquartered in [New York](#), its many bodies, specialized agencies and related organizations are situated in other parts of the world, particularly in Europe:

Contents [hide]

- 1 Europe
- 2 North America
- 3 South America
- 4 Africa
- 5 Middle East
- 6 Asia
- 7 References
- 8 See also

Europe [edit]

- [Austria](#)
 - [Vienna](#)
 - [Comprehensive Nuclear-Test-Ban Treaty Organization Preparatory Commission](#)
 - [International Atomic Energy Agency](#)
 - [Office for Outer Space Affairs](#)
 - [United Nations Commission on International Trade Law](#)
 - [United Nations Industrial Development Organization](#)
 - [United Nations Office at Vienna](#)
 - [United Nations Office on Drugs and Crime](#)
 - [United Nations Postal Administration](#)
 - [United Nations Scientific Committee on the Effects of Atomic Radiation](#)
- [Denmark](#)



The Palace of Nations. The United Nations Office at Geneva (Switzerland) is the second most important UN centre, after the United Nations Headquarters.

- Main page
- Contents
- Featured content
- Current events
- Random article
- Donate to Wikipedia
- Wikipedia store
- Interaction
 - Help
 - About Wikipedia
 - Community portal
 - Recent changes
 - Contact page

- Tools
 - What links here
 - Related changes
 - Upload file
 - Special pages
 - Permanent link
 - Page information
 - Wikidata item
 - Cite this page

- Print/export
 - Create a book
 - Download as PDF
 - Printable version

- Languages
 - Bahasa Indonesia
 -



OSM Institutions Expansion

Open Government Partnership



SECOND OPEN GOVERNMENT NATIONAL ACTION PLAN
FOR THE UNITED STATES OF AMERICA

5. Promote Innovation Through
Collaboration and Harness the Ingenuity of
the American Public

United States Department of State
Open Government Plan

“The Department is implementing .. new flagship
Open Government initiatives: Innovating with
Geographic Data,
which includes
the Imagery to the Crowd”



Sustainable Development Goals and UN Data Revolution
“Fostering and promoting innovation to fill data gaps”

Anche tu puoi essere d'aiuto.

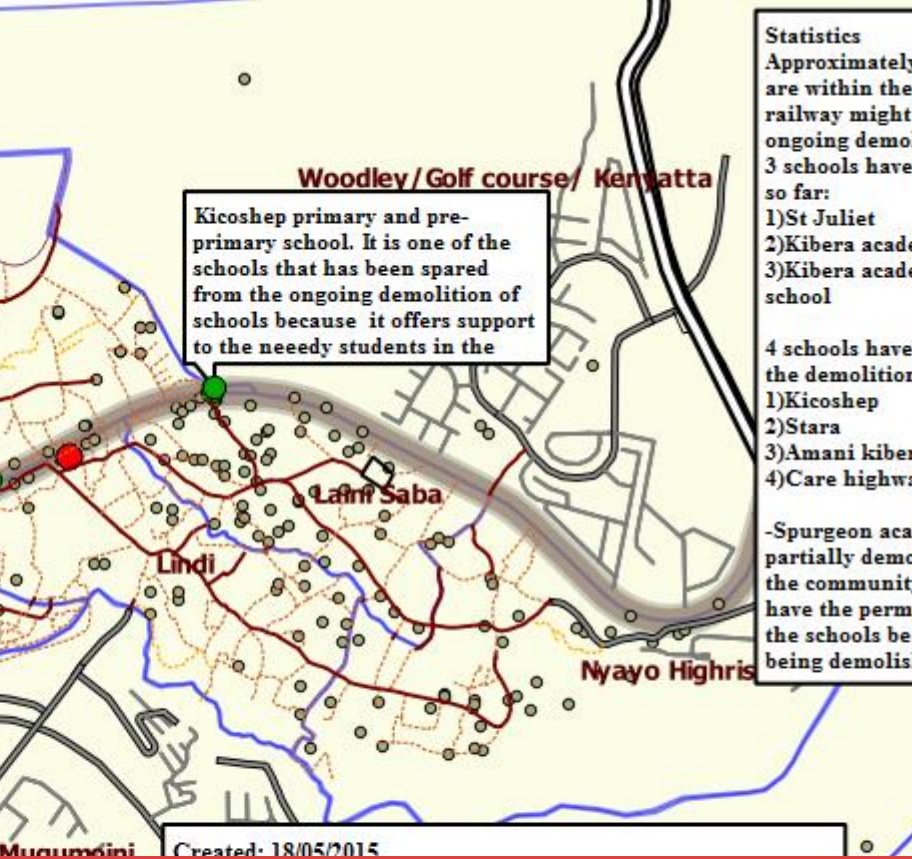
Mappa un qualsiasi posto nel mondo, anche se non sei mai stato lì.

I dati cartografici sono fondamentali per le missioni umanitarie e di sviluppo. MapGive aiuta i nuovi volontari ad imparare a mappare ed a farsi coinvolgere nelle attività on-line.



IMPARA
A
MAPPARE

MapGive as a model commitment for other
countries



Statistics
 Approximately
 are within the
 railway might
 ongoing demo
 3 schools have
 so far:
 1)St Juliet
 2)Kibera acad
 3)Kibera acad
 school

4 schools have
 the demolition
 1)Kicoshep
 2)Stara
 3)Amani kiber
 4)Care highw

-Spurgeon aca
 partially demo
 the communit
 have the perm
 the schools be
 being demolis



Intermediaries

Lessons

GovClub

Get together and work together

Go where you aren't supposed to be

Pretend it already works that way

Love the Process

There is a hunger for real stuff



Thanks!

Mikel Maron @mikel

<http://mapgive.state.gov/> @mapgive